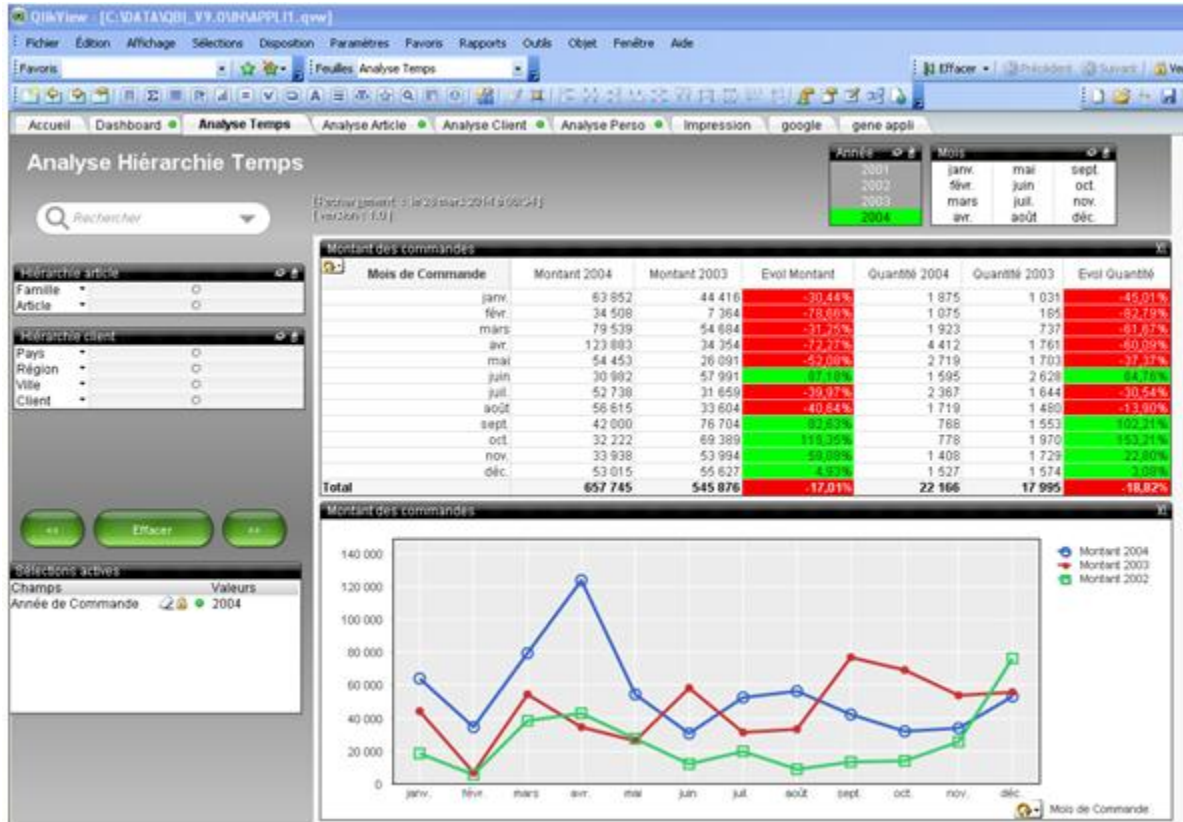





BURST APPLICATION WITH QBI

You want burt your application with QBI.
 Example: This is my application to burst APPL11.qvw



I want to refresh and burst my application per family

Hiérarchie article	
Famille	1 Vetements Hommes
Article	2 Vetements Femmes
	3 Survetements
Hiérarchie	4 Maillots de Bain
Pays	5 Chaussure Femmes
Région	6 Chaussure Hommes
Ville	7 Vetements Enfants
Client	8 Vetements Bébé

Open management console QBI.
 Click button Actions.
 Click to add an action. 
 Choose your application.





The screenshot shows the 'Actions' management console. On the left is a sidebar with navigation options: 'General Parameters', 'Actions', and 'Logs'. Below these are various action categories like 'GENERAL', 'FILTER', 'CYCLE', 'MAIL', 'GENERATED FORMAT', etc. The main area displays a document path: 'C:\DATA\QBI_V9_0\IN\APPLI1.qvw'. A red button labeled 'No Refresh' is visible. An 'Info' dialog box is open, displaying 'Analysis completed' and an 'OK' button.

Clicking on the button to set the refresh

This screenshot shows the same 'Actions' management console. The document path remains 'C:\DATA\QBI_V9_0\IN\APPLI1.qvw'. The red 'No Refresh' button has been replaced by a green 'Refresh' button, indicating that the refresh functionality has been successfully enabled.

Clicking on the button QVW in generated Format



Actions

Management Console QBI

General Parameters | Actions

Logs

GENERAL | FILTER

CYCLE | MAIL

QVW | PDF

CSV | HTML

XML | XLS

TCD | QVD

PPT | PNG

BOOKMARK | BURST

APPLICATION GENERATOR | GOOGLE

Mode : Add ID New : 1

ACT_ID	ACT_NDM	DOC_NDM	ACTIE	REFRESH	FAY	FILTRES	CYCLE	MAIL	QVW	PDF	CSV	HTML	XLS	TCD	QVD	PPT	PNG	GOD	BURST	QVW	PDF	CSV	HTML	XLS	TCD	QVD	PPT	PNG	GOD	PRES	
QVW																															

Clicking on the button to set QVW
 Select Dynamic directory and Dynamic Name

Actions

Management Console QBI

General Parameters | Actions

Logs

GENERAL | FILTER

CYCLE | MAIL

QVW | PDF

CSV | HTML

XML | XLS

TCD | QVD

PPT | PNG

BOOKMARK | BURST

APPLICATION GENERATOR | GOOGLE

Mode : Add ID New : 1

ACT_ID	ACT_NDM	DOC_NDM	ACTIE	REFRESH	FAY	FILTRES	CYCLE	MAIL	QVW	PDF	CSV	HTML	XLS	TCD	QVD	PPT	PNG	GOD	BURST	QVW	PDF	CSV	HTML	XLS	TCD	QVD	PPT	PNG	GOD	PRES	
QVW																															
Directory QVW = C:\DATA\QBI_V9_0\OUT\QVW																															
Dynamic Directory = ND										ND : no dynamic path NAAAA: year ex : year 2011 path=2011) NAAAA-1: year-1 ex : year 2011 path=2010) NAAAAMMJJ: date ex : 15/01/2009 path=20090115) NAAAAMM11-1: vescherdax ex : 15/01/2009 path=20090114)																					
Dynamic Name = BURST										BURST the name is constructed with the filter value test_France.pdf XXXX\$TEXT XXXX among the choices \$TEXT add text in the name test_TEXT_....pdf NF1 we construct the name with the value of filter1 NF2 we construct the name with the value of filter2																					



Clicking on the button BURST

Management Console QBI

General Parameters Actions

Logs

GENERAL FILTER

CYCLE MAIL

QVW PDF

CSV HTML

XML XLS

TCD QVD

PPT PNG

BOOKMARK **BURST**

APPLICATION GENERATOR GOOGLE

Mode : Add ID New : 1

Appuyez sur F1 pour obtenir de l'aide

31/03/2014 16:52:29*

Clicking on the button to set the burst
 Select the id of the table containing the data burst and the field

CH999			
Code Famille	Code Famille	=lmoniez@infinicons... 1	
1	1	lmoniez@infiniconsell.fr	1
2	2	lmoniez@infiniconsell.fr	1
3	3	lmoniez@infiniconsell.fr	1
4	4	lmoniez@infiniconsell.fr	1
5	5	lmoniez@infiniconsell.fr	1
6	6	lmoniez@infiniconsell.fr	1
7	7	lmoniez@infiniconsell.fr	1
8	8	lmoniez@infiniconsell.fr	1



Actions

Management Console QBI

General Parameters | Actions

Logs

GENERAL | FILTER

CYCLE | MAIL

QVW | PDF

CSV | HTML

XML | XLS

TCD | QVD

PPT | PNG

BOOKMARK | BURST

APPLICATION GENERATOR | GOOGLE

Mode : Add ID New : 1

ACT_ID	ACT_NOM	DOC_NOM	ACTIF	REFRESH	FAV	FILTRES	CYCLE	MAIL	QVW	PDF	CSV	HTML	XLS	TCD	QVD	PPT	PNG	GDD	BURST	QVW	PDF	CSV	HTML	XLS	TCD	QVD	PPT	PNG	GDD	PREs

Burst

Burst Tab code = CH999

Burst Field = Code Famille

Onglet	TYPE	ID	OB...	Caption
Accueil	Text	TX17		
		TX18		
		TX19		

FIELDS
%BUREAU_KEY
%COD_EMPLOYE_K...
%CODE_ARTICLE...
%CODE_CDE_KEY

Save it



You can launch the action



Actions

Management Console QBI

General Parameters | Actions

Logs

GENERAL | FILTER

CYCLE | MAIL

QVW | PDF

CSV | HTML

XML | XLS

TCD | QVD

PPT | PNG

BOOKMARK | BURST

APPLICATION GENERATOR | GOOGLE

Mode : Add ID New : 2

ACT_ID	ACT_NOM	DOC_NOM	ACTIF	REFRESH	FAV	FILTRES	CYCLE	MAIL	QVW	PDF	CSV	HTML	XLS	TCD	QVD	PPT	PNG	GDD	BURST	QVW	PDF	CSV	HTML	XLS	TCD	QVD	PPT	PNG	GDD	PREs
1	APPL1	APPL1.qvw																												

Burst

Burst Tab code = CH999

Burst Field = Code Famille

Onglet	TYPE	ID	OB...	Caption
Accueil	Text	TX17		
		TX18		
		TX19		

FIELDS
%BUREAU_KEY
%COD_EMPLOYE_K...
%CODE_ARTICLE...
%CODE_CDE_KEY



Actions

Management Console QBI

General Parameters | Actions | Logs

GENERAL | FILTER | CYCLE | MAIL | QVW | PDF | CSV | HTML | TCD | PPT | BOOKMARK | BURST | APPLICATION GENERATOR | GOOGLE

ACT_ID	ACT_NOM	DOC_NOM	ACTIF	REFRESH	FILTRES	CYCLE	MAIL	QVW	PDF	CSV	HTML	TCD	QVD	PPT	BOOKMARK	BURST	APPRES
1	APPLI1	APPLI1.qvw	✓	✓	✓	✓	✓	✓	✓	✓	✓	✓	✓	✓	✓	✓	✓

Burst

Burst Tab code = CH999

Burst Field = Code Famille

Confirmation: Confirm action? (no to create .bat only)

Fields: %BUREAU_KEY, %CODE_EMPLOYE_K..., %CODE_ARTICLE..., %CODE_CDE_KEY

Mode: Add ID New: 2

Clic Yes

QVW

Fichier Edition Affichage Favoris Outils ?

Précédente Recherche Dossiers

Adresse: C:\DATA\QBI_V9\Q\OUT\QVW

Gestion des fichiers

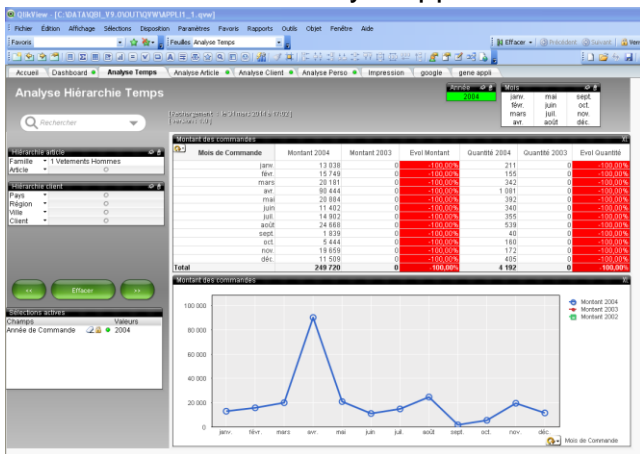
- Créer un nouveau dossier
- Publier ce dossier sur le Web
- Partager ce dossier

Autres emplacements

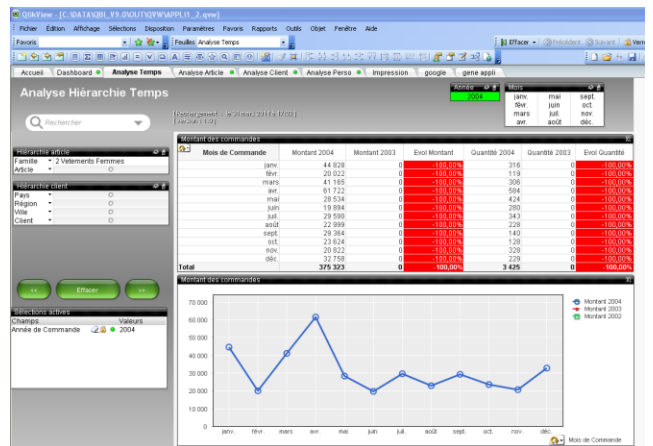
- OUT

APPLI1_1.qvw (353 Ko), APPLI1_2.qvw (353 Ko), APPLI1_3.qvw (356 Ko), APPLI1_4.qvw (346 Ko), APPLI1_5.qvw (347 Ko), APPLI1_6.qvw (346 Ko), APPLI1_7.qvw (343 Ko), APPLI1_8.qvw (352 Ko)

Results Reduced family 1 application

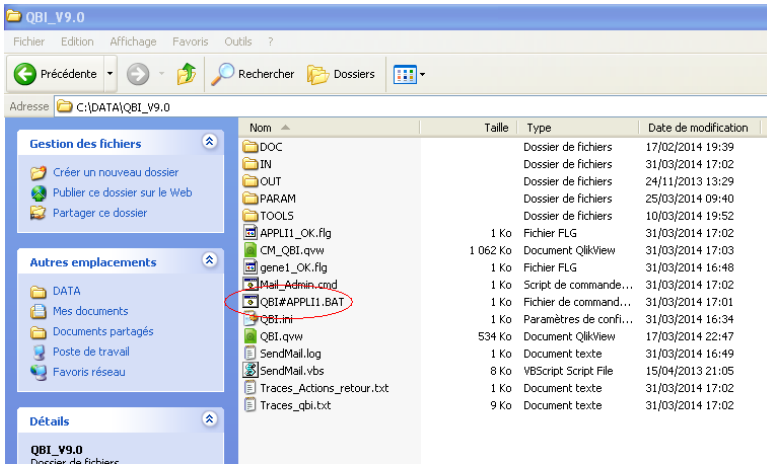


Reduced family 2 application





You can regenerate with the. Bat and set it in a scheduler.



You can visualize and analyse logs

